



Apartment

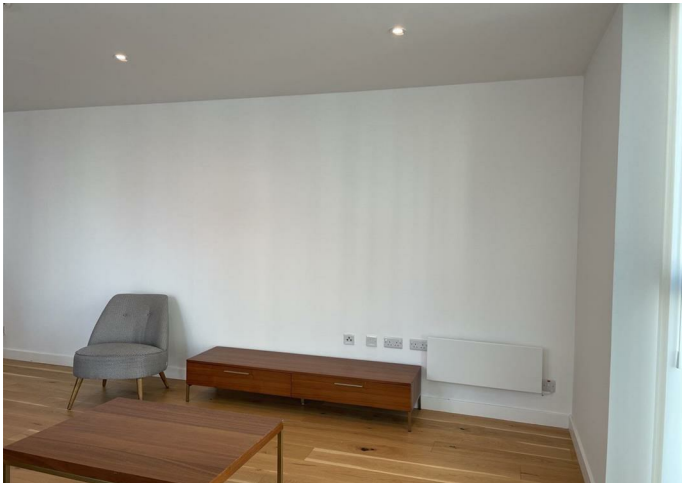
AXIUM, APT 102 36 WINDMILL STREET, BIRMINGHAM, B1 1FW

Per month

£1,010

FEATURES

- 1-bedroom modern apartment
- Contemporary bathroom design
- Close to public transport
- Secure entry system
- Spacious reception room
- Located in central Birmingham
- Ideal for singles or couples
- Walking distance to amenities



 **CITY COMFORT**
UK Properties Specialist



1 Bedroom Apartment located in Birmingham

Welcome to this charming apartment located at 36 Windmill Street in the vibrant city of Birmingham. This delightful property offers a perfect blend of comfort and convenience, making it an ideal choice for individuals or couples seeking a modern living space.

The apartment features a well-appointed reception room, providing a welcoming area for relaxation and entertainment. The single bedroom is designed to be a peaceful retreat, ensuring a restful night's sleep. The bathroom is equipped with essential amenities, catering to your daily needs.

Situated in a lively neighbourhood, this apartment is close to a variety of local shops, cafes, and restaurants, allowing you to enjoy the best of urban living. With excellent transport links nearby, you will find it easy to explore all that Birmingham has to offer, from its rich cultural heritage to its bustling city centre.

This property presents a wonderful opportunity for those looking to embrace a convenient lifestyle in a thriving city. Whether you are a first-time buyer or seeking a rental investment, this apartment is sure to meet your needs. Don't miss the chance to make this lovely space your new home.

Call us on


01617061208

sales@citycomfortapartments.co.uk

<https://www.citycomfortapartments.co.uk/>

Council Tax Band

C

Energy Efficiency Rating		
	Current	Potential
<i>Very energy efficient - lower running costs</i>		
(92 plus) A		
(81-91) B		
(69-80) C		
(55-68) D		
(39-54) E		
(21-38) F		
(1-20) G		
<i>Not energy efficient - higher running costs</i>		
England & Wales		EU Directive 2002/91/EC 

Agents Note: Whilst every care has been taken to prepare these particulars, they are for guidance purposes only. All measurements are approximate and are for general guidance purposes only and whilst every care has been taken to ensure their accuracy, they should not be relied upon and potential buyers are advised to recheck the measurements.